



PONDICHERRY UNIVERSITY

(A Central University)

**Bharat Ratna Dr. B.R. ambedkar Administrative Building,
R.Venkataraman Nagar, Kalapet, Puducherry – 605 014.**

PU/Dean(SW)/2019-20/396

Dt. 06.12.2019

CIRCULAR

Sub: Guidance for properly wrapping and disposing of sanitary waste as per CPCB guidelines - regd.

Ref: 'Guidelines on Sanitary Waste Management, 2016' Notified by the Government of India through CPCB.

-oOo-

- Sanitary waste disposal has become an increasing problem and a mammoth task for management not only in this country but also in our campus. The napkins are either flushed or thrown into the garbage bin which usually gets mixed up with dry, wet and domestic hazardous waste by posing grave health risks not only for the house keepers and waste collectors, but also pollutes the soil and water.
- Considering the public health issues, choking of drainage pipeline coupled with soil and water pollution, a 'quick launch action', was evolved as per the directions given by the CPCB, i.e. either incineration (or) proper wrapping and burial (Appendix – 1&2).
- Proceeding the situation analysis a 'step-by-step' educational pamphlets was designed for easy understanding and needs to be widely circulated among the students (e-circulation), posters can also be put-up at strategic locations in the hostels covering all floors (Appendix -2).
- In the absence of incinerator, proper wrapping and disposing in the 'feminine hygiene bin' is recommended.
- The Girls Hostel Office should assure the availability of adequate 'newspaper' at easy reach and also should ensure 'newspaper' in reserve.

(Note: The Girls Hostel Office should pool old newspapers from any Wing or Section, similarly, every Wing or Section should support Girls Hostel Office in this regard).

...2/-

- The sanitary napkin should be properly wrapped in 'newspaper' and discarded in the 'feminine hygiene bin'. Later the House keeping staff should hand over to the waste collector for safe burial.

*Properly Wrapped Sanitary Waste → Feminine Hygiene Bin → Housekeeping staff
→ Door to Door Collection → Burial*

- The 'house-keeping staff' and 'health committee' need awareness and hands on training by the 'Girls Hostel Wardens' concerned, in association with Coordinator, Office of Green Campus.
- All the 'Girls Hostel Wardens' should weekly visit their respective Hostel, to check and monitor the availability of newspaper and safe disposal as per direction.
- The Girls Hostel Office should maintain a 'Hygiene Management Register' at all the Girls Hostels.
- The Girls Hostel Office should provide consolidated report (Monthly) regarding compliance in coordination with Wardens concerned.
- **All the Girls Hostel Wardens & Students should comply for safety and sustenance**

A. Sheli Shukla 6/12/19.
DEAN, STUDENT'S WELFARE

Enclosure: Appendix – 1: Action Plan
Appendix – 2: Educational Pamphlet

Copy to:

1. The Chief Warden, Girls Hostel, Pondicherry University
2. The Systems Manager, Computer Centre, Pondicherry University – for web hosting the circular
3. The Co-ordinator, Green Campus Initiatives, Waste Management Rules & Green Potocol, Pondicherry University.

Purpose	Quick Launch Action for Safe Disposal of Sanitary Waste at Girls Hostels, fostering Green Campus @ PU
Target	Girls Hostel, PU
Direction by the Government of India	<p>As per the Solid Waste Management, Rules, 2016, the Government of India through CPCB has framed the ‘Guidelines for Management of Sanitary Waste’ to ensure proper disposal of sanitary waste. The existing definitions and sanitary waste management that are recommended under SWM Rules, 2016, are as follows:</p> <ul style="list-style-type: none"> • Rule 3(19), “dry waste” means waste other than bio-degradable waste and inert street sweepings and includes recyclable and non-recyclable waste, combustible waste and <u>sanitary napkin and diapers</u>, etc; • Rule 3(41), “sanitary waste” means wastes comprising of used <u>diapers, sanitary towels or napkins, tampons</u>, condoms, incontinence sheets and any other similar waste; • Rule (4)(b), states that <u>wrap securely the used sanitary waste like diapers, sanitary pads etc.</u>, in the pouches provided by the manufacturers (or) brand owners of these products (or) <u>in a suitable wrapping material</u> as instructed by the local authorities and shall place the same in the bin meant for dry waste or non-bio-degradable waste; • Rule 15(zg) (iv) & (vi), stated that the Local Authority shall <u>create public awareness through information, education and communication campaign and educate the waste generators on wrapping used sanitary waste securely as and when generated in the pouches provided by the brand owners (or) a suitable wrapping</u> as prescribed and place the same in the bin.
Situation Analysis	<p>At Girls Hostel, incinerators were provided by PU admin for the disposal of ‘sanitary napkins’ and the same was not used by the students for many months from now. The situation was investigated by Dr. M. Nandhivarman, Coordinator, Office of Green Campus through multiple discussions with, Girls Hostel House-keepers (24-09-2019); Girls Hostel Wardens (11-10-2019); and with Girl students (16-10-2019). Further, accompanied by a Girls Hostel Office Team, personal investigation was also carried out to study the incinerators condition (14-10-2019 and 08-11-2019). The following were the two reasons identified (student and staff suggestion):</p> <ol style="list-style-type: none"> 1. <i>As the exhaust vent is close to the window, the smell and the less-smoke exhaust enters the building through wind, and the students feel allergic to such odor</i> 2. <i>Short circuit and non-functional</i> <p><u>To overcome such situations, as an alternative, proper wrapping in the ‘news paper’ and disposing in a ‘feminine hygiene bins’ for burial is recommended as mentioned in the ‘Guidelines on Sanitary Waste Management’ Notified by the Government of India through CPCB.</u></p> <p><u>The step-by-step educational pamphlet was designed by Dr. M. Nandhivarman, Coordinator, Office of Green Campus and fine-tuned by the Chief Warden, Girls Hostel Wardens, Girls Hostel Office, at the meeting held on 06-11-2019 (Appendix - 2).</u></p>

Recommended Action	<p>Recommended action for the Producers of Sanitary Wastes (sanitary towels, napkins, tampons) at PU:</p> <p>As mentioned in the para 5.0 (5.1) (V) of the ‘Guidelines for Management of Sanitary Waste (GMSW)’, as per Solid Waste Management Rules, 2016, published by Central Pollution Control Board, Ministry of Environment, Forest & Climate Change, Govt. of India,</p> <p>Current practices that were recommended for safe disposal of sanitary wastes are by: (1) Incinerators & (2) Special disposal bins</p> <p><u>Note:</u> Many institutions and schools are using ‘incinerators’ or ‘<i>feminine hygiene bins</i>’ for proper disposal of napkins.</p> <p>Para 7.0 (i) (b) of GMSW states that, the used sanitary waste should be wrapped in old newspaper and placed in dry-waste bin for collection by authorized waste picker (during door to door collection).</p> <p>Post disposal, the ‘Special disposal bins’ need to be taken care by the house keeping staff for safe disposal (burial) as mentioned in para (6.0) under recommended options for disposal of different sanitary wastes (as per Guidelines)</p> <table border="1" data-bbox="371 835 1481 954"> <tr> <td data-bbox="371 835 1035 954"> <ul style="list-style-type: none"> • Used tissues, paper, cloth, cotton • Cotton napkins (reusable or commercial) • Commercial napkins with plastic and liners </td><td data-bbox="1035 835 1481 954"> <p>Deep burial of Properly wrapped and segregated sanitary wastes</p> </td></tr> </table> <p><i>Properly Wrapped Sanitary Waste → Feminine Hygiene Bin → Housekeeping staff → Door to Door Collection → Burial</i></p>	<ul style="list-style-type: none"> • Used tissues, paper, cloth, cotton • Cotton napkins (reusable or commercial) • Commercial napkins with plastic and liners 	<p>Deep burial of Properly wrapped and segregated sanitary wastes</p>
<ul style="list-style-type: none"> • Used tissues, paper, cloth, cotton • Cotton napkins (reusable or commercial) • Commercial napkins with plastic and liners 	<p>Deep burial of Properly wrapped and segregated sanitary wastes</p>		



Quick Launch Action at Girls Hostel Fostering Green Campus @ PU

DOs for Sanitary Napkin & Tampon Disposal

Do's ✓

Wrapping Paper (Old News Paper)



Picking-up Wrapping Paper



Rolling (do not scramble)



1st Folding



Side Locking



Ready for Disposal



Disposing in the 'Feminine Hygiene Bin'



Recommendations adopted from the 'Guidelines for Management of Sanitary Waste', as per Solid Waste Management Rules, 2016. Published by Central Pollution Control Board, Ministry of Environment, Forest & Climate Change, Govt. of India.

– Office of Green Campus, PU.



Quick Launch Action at Girls Hostel Fostering Green Campus @ PU

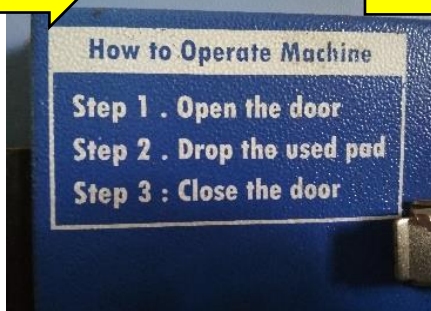
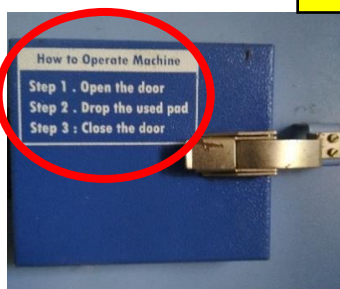
DOs for Sanitary Napkin & Tampon Disposal

Do's ✓

Incinerator



Incineration



Incineration



Recommendations adopted from the 'Guidelines for Management of Sanitary Waste', as per Solid Waste Management Rules, 2016. Published by Central Pollution Control Board, Ministry of Environment, Forest & Climate Change, Govt. of India.

– Office of Green Campus, PU.



Quick Launch Action at Girls Hostel Fostering Green Campus @ PU

DON'Ts for Sanitary Napkin & Tampon Disposal

Don'ts

Flushing



Dumping in Flush Tank



Common Dust Bin



Littering in the Domestic Waste Stream



Recommendations adopted from the 'Guidelines for Management of Sanitary Waste', as per Solid Waste Management Rules, 2016. Published by Central Pollution Control Board, Ministry of Environment, Forest & Climate Change, Govt. of India.

– Office of Green Campus, PU.